

See the Road Ahead

RoadVision Technologies

Innovations in Highway Safety

The *Snowplowable* Highway Beacon[®]

The Long-Awaited Breakthrough For Driver Visibility
During Dark Rain Conditions In *ALL* Climate Regions



Which Road Would You Prefer to Drive During Night Rain?



UNSAFE ROADWAYS

Over 20,000 fatalities or 56% of all traffic related fatalities in the U.S. occur due to lane/roadway departure accidents.

Very poor visibility is a deadly hazard facing the driving public during night rain conditions - causing motorists to "drive blind" and too often resulting in tragedy on U.S. roadways.



Government and Industry's Preferred Solution:

- Raised Reflective Pavement Markers (RRPMs) – studies show significant accident reduction where they are installed
- Painted reflective lines (although ineffective in adverse weather conditions)

ROADVISION TECHNOLOGIES: FAST FACTS

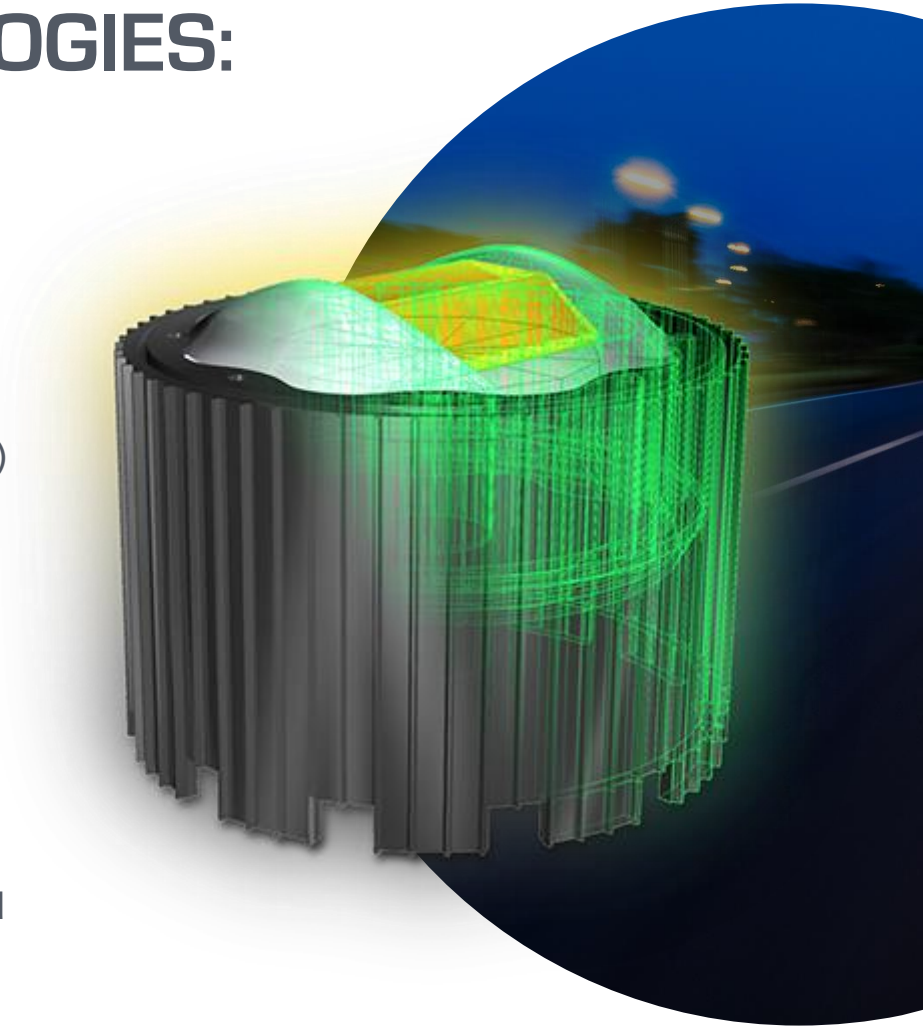
Introducing: Highway Beacon®

The patented Highway Beacon® is a spring loaded, raised reflective pavement marker(RRPM) designed to depress upon snowplow or vehicle tire impact.

It provides unmatched visibility of roadway lane and edge lines for drivers during inclement conditions in all climate regions.

Highway Beacon® is the first RRPM system viable in snow climates where the fatal night-rain visibility hazard remains prevalent due to painted lane striping being ineffective.

RoadVision is ready to begin manufacturing and commercialization of this vital public safety product.



KEY HIGHLIGHTS



Patented under U.S. Patents 9,534,351 & 10,443,198 and Canada 2,729,666



Commercialization Ready - **U.S. Manufactured** creating high-wage industrial & road construction/installation jobs



Strong U.S. and Canadian patent estate



Maryland, California and Alberta, Canada New Products review approvals

INDUSTRY

Transportation, Roadway Safety, and Infrastructure

MARKET SIZE

3 million miles of roadway in U.S. valued at over \$16 Billion.

TARGET CUSTOMER

Very well funded and motivated U.S. and Canadian **Department of Transportation (DOT)** agencies within state, federal, county, and municipal governments.

International markets.

Numerous private sector applications.

SURPRISINGLY SIGNIFICANT MARKET OPPORTUNITY

\$16+ Billion U.S. TAM

U.S. Interstate-Freeway System

1.1 M

Lane Miles

70 M

markers required (80 ft. spacing)

\$4.2 Billion

Valuation (\$60 unit price)

U.S. Rural & Non-Freeway Roads

200M

required markers (40 ft. spacing)

\$12 Billion

Valuation

3 million miles

of paved roads exist in the U.S. with
24 million miles of paved roads worldwide.

Painted, reflective lane stripes are not visible during rainstorms because they are covered by water. **Only RRPMs can be seen during dark rain conditions because they protrude above the water layer.** Previous RRPMs are destroyed by snowplows and truck traffic.

****For autonomous vehicle guidance systems, RRPMs provide a much stronger light source to detect – especially during dark rain.**



75%

75% of U.S. roadways are in snow climates where painted lines and previously available snowplowable markers cannot be seen during night rain conditions. Snowplows and traffic severely damage most road markers each season.

No current RRPMs can withstand snowplow & traffic impacts, leaving snow climate roads very poorly delineated.

Heavy freeway traffic causes standard surface reflectors to lose 90% reflectivity within the first year.

INNOVATIVE DESIGN



Highway Beacon® is a critical innovation for public safety - a developed technology for the first time solving the roadway visibility dangers in both snow and sunbelt climates. Highway Beacon® is a groundbreaking “depressible road marker” which is visible in dark rain and storm-runoff conditions.

The innovative, shock-absorption technology makes Highway Beacon® plow and traffic impact proof and is the long sought-after solution for effective road markers in snow climates.

IMPACT RESILIENT DESIGN

Upon impact from any direction, Highway Beacon's® steel piston with the attached reflective lens assembly is depressed below the pavement. After impact, the assembly immediately springs back into visible position above the road surface.

Highway Beacon's® spring mechanism will not freeze or jam!

FUTURE ADAPTATIONS

Highway Beacon® is designed to house transmitters, sensors, cameras and other devices for autonomous vehicle guidance and Smart City applications.

HIGHWAY BEACON DEPRESSIBLE ACTION

<https://vimeo.com/561620246>

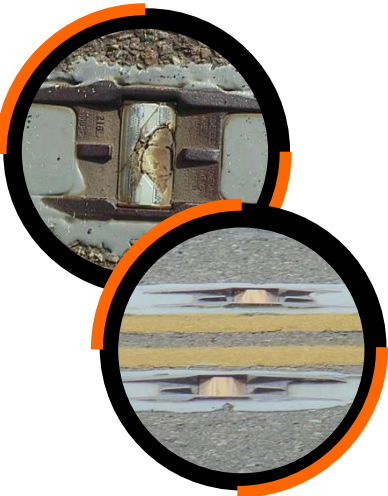
COMPETITIVE OVERVIEW

Highway Beacon® is by default the only viable reflective marker solution for roads in all climates.



PAINTED REFLECTIVE LANE STRIPING

- Not visible during heavy rainfall, water-pooling, or storm runoff
- Not visible during dark-rain conditions

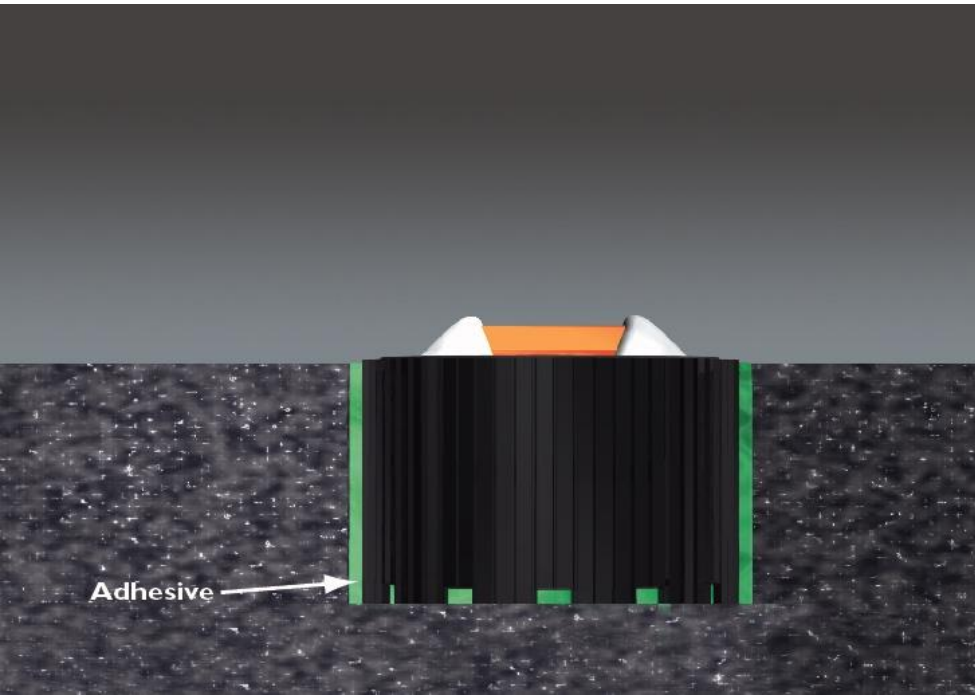


COMPETITOR'S RAISED REFLECTIVE MARKERS

- Existing snowplowable RRPMs height profiles are 75% below federal standards
- These "snowplowable" products have reflector lens profiles that are too low for effective wet/nighttime visibility
- Heavy traffic causes reflectors to lose 90% of their reflectivity in only one year
- "Snowplowable" casting markers cause plow and pavement damage from plow blade skipping

BEACON FOR SOLUTION

Highway Beacon® is the only proven and feasible raised reflective pavement marker (RRPM) technology providing a wet-night delineating safety system suitable for both snow and sunbelt climates.



PAINTED LINES FAIL, HIGHWAY BEACON® PREVAILS

Highway Beacon® protrudes above rainwater levels to remain visually effective during night rainstorms.

IMPACT RESILIENT DESIGN

Highway Beacon® is the first durable and only RRPM product available to roadway governing authorities who want cost-effective road safety solutions designed for all climates.

Highway Beacon® eliminates road damaging snowplow blade skipping while remaining durable on high-traffic trucking and vehicular routes.

GOVERNMENT-SOUGHT AFTER SOLUTION

Transportation authorities and government leaders have responded favorably to Highway Beacon® as the next-stage Raised Pavement Marker (RPM) solution.

Highway Beacon® achieved preliminary approvals by 3 Departments of Transportation new product committees in both the United States and Canada.

NEW PRODUCT COMMITTEE APPROVALS



CalTrans New
Product Committee



Maryland DOT New
Products Committee

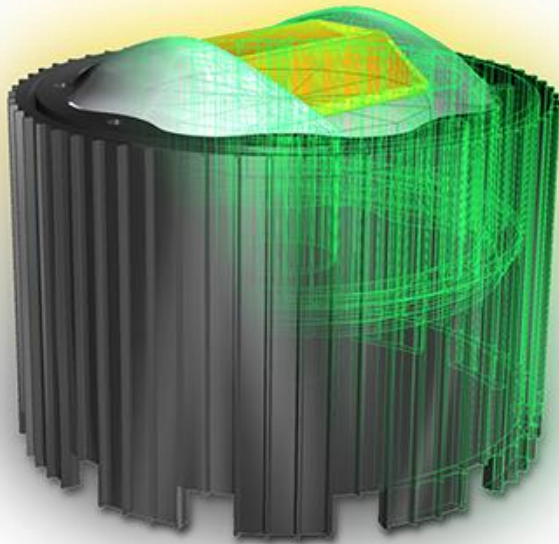






Alberta, Canada Ministry
of Transportation

DISTINCTION

Only evaluated products which will be purchased by the agencies pending positive live-road testing are placed on new product committee approval lists.

UNPARALLELED ADVANTAGES



-  Highway Beacon® is the only RRM technology viable in both sunbelt and snow climates
-  Transportation department relationships are prime to Highway Beacon's® commercialization
-  Competitors cannot compete due to inferior product specifications for 75% of available highway or non-highway roads
-  Highway Beacon® can be easily installed and serviced

RoadVision has strong intellectual property protecting its design.

RoadVision is establishing additional patents to Highway Beacon® installation process.

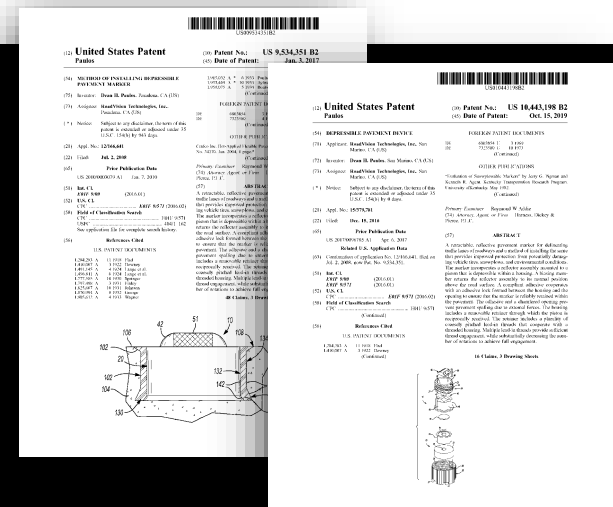
ROADVISION PATENT

U.S. Utility Patents

No. 9,534,351 & 10,443,198

Canada Utility Patent

No. 2,729,666



WHY INVEST?

In this non-sexy, surprisingly large recession-proof market for road markers, RoadVision has developed and is commercializing the first effective and safe solution for lane delineation in snow regions. The snowplowable capability alone makes this the default future product for departments of transportation in a multi-billion dollar market. RoadVision is a company that recognized the unmet need for a safe and effective road marker breakthrough for snow climates and a long sought-after solution to an unsolved problem for Federal, State, County and City Departments of Transportation.

Financial projections and investment details are available to qualified investors.

INVESTMENT RELATIONS



Larry G. Stambaugh
Chairman and Chief Executive Officer



Dean Paulos, Founder & President
Phone: 626-277-9675
Email: dpaulos@highwaybeacon.com